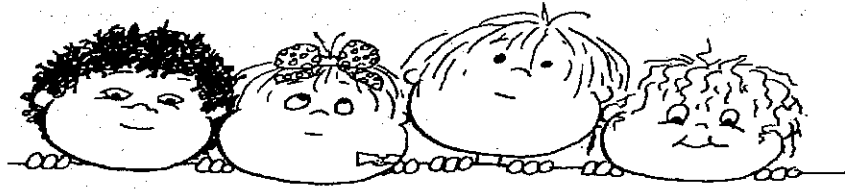


A Z Y X W V U T S R Q P O

## TIPS FOR ACCESSING HELP IN PA



### The PENNSYLVANIA DEPARTMENT OF HEALTH Regional Nurse Consultants in each District Office

Family Health Nursing Service Consultant: Special Health Care Needs  
Family Health Nursing Service Consultant: Maternal Child Health  
School Health Nurse Consultant

**1-877-PA HEALTH**  
[www.health.state.pa.us](http://www.health.state.pa.us)

### Systems of Care/SPECIAL KIDS NETWORK/Recreation and Leisure

**800-986-4550** [www.gotoskn.state.pa.us](http://www.gotoskn.state.pa.us)

The Special Kids Network/System of Care program works to address barriers and challenges some families experience when trying to get services for their children or in just trying to help their children lead full, productive and healthy lives.

### Special Health Care Programs

PA DEPT OF HEALTH call 800-986-4550

This number is for SKN-ask to be connected to the Harrisburg Programs for the following conditions: (Income Eligibility/Use a participating provider)

- |                         |                                     |                        |
|-------------------------|-------------------------------------|------------------------|
| Cooley's Anemia         | Cystic Fibrosis                     | Spina Bifida           |
| Congenital Heart        | Cleft Palate                        | Hemophilia             |
| Chronic Respiratory     | Orthopedic                          | Traumatic Brain Injury |
| End Stage Renal Disease | Hearing/Speech/Language Impairments |                        |

Revised July 2012

Q R S T U V W X Y Z

B  
C  
D  
E  
F  
G  
H  
J  
K

n  
m  
l  
k  
j  
i  
h  
g  
f  
e  
d  
c  
b  
a

A Z Y X W V U T S R Q P O

PA DEPARTMENT OF HEALTH  
**SCHOOL HEALTH CONSULTANTS: SHC**  
**SPECIAL HEALTH CARE NEEDS CONSULTANTS (SHCNC)**  
**MATERNAL CHILD HEALTH CONSULTANT (MCHC)**

SHC: Kristin Cheslick <a href="mailto:kcheslick@pa.gov">kcheslick@pa.gov</a> SHCNC: Linda Denault <a href="mailto:ldenault@pa.gov">ldenault@pa.gov</a> MCHC: Gail Ide <a href="mailto:gide@pa.gov">gide@pa.gov</a>	665 Carey Avenue, Suite 5 Wilkes-Barre PA 18706-5485 570-826-2238 570-826-2062(fax)	<b>NORTHEAST DISTRICT</b> Carbon Lackawanna Lehigh Luzerne Monroe Northampton Pike Susquehanna Wayne Wyoming
SHC: Sheri Mountz <a href="mailto:smountz@pa.gov">smountz@pa.gov</a> SHCNC: Monika Antosy <a href="mailto:mantosy@pa.gov">mantosy@pa.gov</a> MCHC: Vacant	625 Cherry Street Reading PA 19602-1187 610-378-4352 610-378-4527(fax)	<b>SOUTHEAST DISTRICT</b> Berks Bucks Chester Delaware Lancaster Montgomery Philadelphia Schuylkill
SHC: Deb Frey <a href="mailto:deffray@pa.gov">deffray@pa.gov</a> SHCNC: Vacant MCHC: Pam Klotz <a href="mailto:pklotz@pa.gov">pklotz@pa.gov</a>	1000 Commerce Park Drive Suite 109 Williamsport PA 17701 570-327-3400 570-327-3748(fax)	<b>NORTHCENTRAL DISTRICT</b> Bradford Centre Clinton Columbia Lycoming Montour Northumberland Potter Snyder Sullivan Tioga Union
SHC: Sue Templin <a href="mailto:stemplin@pa.gov">stemplin@pa.gov</a> SHCNC: Carol Miller <a href="mailto:carolmille@pa.gov">carolmille@pa.gov</a> MCHC: Vacant	30 Kline Plaza Harrisburg PA 17104 717-787-8092 717-772-3151(fax)	<b>SOUTHCENTRAL DISTRICT</b> Adams Bedford Blair Cumberland Dauphin Franklin Fulton Huntingdon Juniata Lebanon Mifflin Perry York
SHC: Donna Leffler <a href="mailto:dleffler@pa.gov">dleffler@pa.gov</a> SHCNC: Lisa Snyder <a href="mailto:lisnyder@pa.gov">lisnyder@pa.gov</a> MCHC: Joy Gresick <a href="mailto:jgresick@pa.gov">jgresick@pa.gov</a>	19 McQuiston Drive Jackson Center PA 16133 724-662-6068 724-662-6086 (fax)	<b>NORTHWEST DISTRICT</b> Cameron Clarion Clearfield Crawford Elk Erie Forest Jefferson Lawrence McKean Mercer Venango Warren
SHC: Joseph Donahue <a href="mailto:jodonahue@pa.gov">jodonahue@pa.gov</a> SHCNC: Vacant MCHC: Corrine Putt <a href="mailto:cputt@state.pa.us">cputt@state.pa.us</a>	233 West Otterman Street Greensburg, PA 15601 724-830-2701 724-832-5237 (fax)	<b>SOUTHWEST DISTRICT</b> Allegheny Armstrong Beaver Butler Cambria Fayette Greene Indiana Somerset Washington Westmoreland

B  
C  
D  
E  
F  
G  
H  
I  
J  
K

O  
N  
M  
L  
K  
J  
I  
H  
G  
F  
E  
D  
C  
B  
A

P Q R S T U V W X Y Z

A Z y x w v u t s r q p o

PA DEPARTMENT OF HEALTH District Office 1-877-PA HEALTH

[www.health.state.pa.us](http://www.health.state.pa.us)

**SPECIALTY Areas**

**District Executive Director**  
**District Nurse Administrator**  
 School Health Consultant  
 Maternal/Child Health Consultant  
 Special Health Care Needs Consultant  
 Chronic Disease Consultant/Supervisor  
 Diabetes Nurse Consultant  
 Injury Prevention Coordinator  
 Cardiovascular Risk Coordinator  
 Cancer Prevention Coordinator  
 Tobacco Prevention  
 Public Health Educator  
 EMS Program Specialist

**District Epidemiology Manager**  
**Public Health Physician**  
 Communicable Disease Consultant  
 Communicable Disease Consultant  
 Environmental Health Specialist  
 Sanitarian  
 Immunization Consultant  
 Immunization Consultant  
 HIV Nurse Consultant  
 HIV Representative  
 STD Representative  
 TB Representative  
 Public Health Assistant

**Office Support Staff**

**County STATE HEALTH CENTERS (SHC): PA DEPARTMENT OF HEALTH**  
**Nurses are at each site. Community Health Nurse Supervisors**

You may need to contact your individual County or City Health Department

<b>ALLEGHENY COUNTY HEALTH DEPT.</b> Pittsburgh, PA 15213 <b>Phone:</b> 412-247-7955	<b>ALLENTOWN BUREAU OF HEALTH</b> Allentown, PA 18102 <b>Phone:</b> 610-437-7526
<b>BETHLEHEM BUREAU OF HEALTH</b> Bethlehem, PA 18018 <b>Phone:</b> 610-865-7087	<b>BUCKS COUNTY HEALTH DEPT.</b> Doylestown, PA 18901 <b>Phone:</b> 215-345-3346
<b>CHESTER COUNTY HEALTH DEPT.</b> West Chester, PA 19382 <b>Phone:</b> 610-344-6225	<b>ERIE COUNTY DEPT OF HEALTH</b> Erie, PA 16507 <b>Phone:</b> 814-451-6700
<b>MONTGOMERY COUNTY HEALTH DEPT.</b> Norristown, PA 19404 <b>Phone:</b> 610-278-5117	<b>PHILADELPHIA DEPT OF PUBLIC HEALTH</b> Philadelphia, PA 19107 <b>Phone:</b> 215-685-5227
<b>WILKES-BARRE CITY HEALTH DEPT.</b> Wilkes-Barre, PA 18701 <b>Phone:</b> 570-822-3169	<b>YORK CITY BUREAU OF HEALTH</b> York, PA 17401 <b>Phone:</b> 717-849-2252

B  
C  
D  
E  
F  
G  
H  
I  
J  
K  
L  
M  
N  
O

n  
m  
l  
k  
j  
i  
h  
g  
f  
e  
d  
c  
b  
a

P Q R S T U V W X Y Z

A Z y x w v u t s r q p o

**STATEWIDE RESOURCES:**

**Family to Family**

Please contact Joan Badger-Health Information Coordinator  
PEAL Center at 412-281-4404 ext 18  
866-950-1040 Toll Free 412-281-4409 TTY

**Parent to Parent of PA**

1-888-727-2706  
[www.parenttoparent.org](http://www.parenttoparent.org)

**Brain STEPS**

The Brain Injury School Re-Entry Program  
The Brain Injury Association of Pennsylvania, under contract from the PA Department of Health and partnered with the PA Department of Education, has created the Child & Adolescent Brain Injury School Re-Entry Program called:  
**Brain STEPS (Strategies Teaching Educators, Parents, and Students).**

For more information, contact:  
Brenda Eagan Brown, M.S.Ed.  
Brain Injury School Re-entry Program Coordinator  
Brain Injury Association of Pennsylvania Email: [eaganbrown@biapa.org](mailto:eaganbrown@biapa.org)  
Phone: 724-944-6542 [www.biapa.org](http://www.biapa.org)

**The Epilepsy Foundation Western/Central Pennsylvania**

The Epilepsy Foundation Western/Central Pennsylvania (EFWCP) will ensure that people with seizures are able to participate in all life experiences; and will prevent, control and cure epilepsy through services, education, advocacy and research.

For more information, please contact your local EFWCP office or visit [www.efwp.org](http://www.efwp.org).  
Pittsburgh - 1-800-361-5885  
Erie - 814-451-1135  
Johnstown - 814-262-7494  
Harrisburg - 1-800-336-0301  
TDD EOP/AUX AID - 1-800-855-2880

**PA-Tourette Syndrome Association, Inc.**

132 West Middle Street  
Gettysburg, PA 17325

(717) 337-1134 or (800) 990-3300 [www.patourettesyndrome.org](http://www.patourettesyndrome.org)  
E-mail: [pfkpatsa@cvn.net](mailto:pfkpatsa@cvn.net)

Q R S T U V W X Y Z

B  
C  
D  
E  
F  
G  
H  
I  
J  
K  
L  
M  
N  
O

n  
m  
l  
k  
j  
i  
h  
g  
f  
e  
d  
c  
b  
a

A Z y x w v u t s r q p o  
n  
m  
l  
k  
j  
i  
h  
g  
f  
e  
d  
c  
b  
a

## Health Insurance

**Apply for Medicaid/MAWD/CHIP on the same application:**

To apply: Call toll-free 1-800-986-KIDS OR 1-800-GO BASIC

Contact toll-free number of contractor by referencing:

[www.insurance.state.pa.us](http://www.insurance.state.pa.us) keyword: CHIP

**Apply online at [www.compass.state.pa.us](http://www.compass.state.pa.us)**

Statewide Customer Service Center (SCSC) 1-877-395-8930 or

in Philadelphia->Customer Service Center 1-215-560-7726 or

[www.dpw.state.pa.us](http://www.dpw.state.pa.us) Choose: Apply for Benefits and find your County Assistance Office

DPW Helpline 1-800-692-7462 TTY/TTD 1-800-451-5886

### MEDICAL ASSISTANCE

- PARENTS of Children with Special Needs / Chronic Medical Conditions
  - Are you aware your child may be eligible for medical assistance?
  - These benefits are not dependent on parents income
  - Your child may be eligible even if you have other insurance
  - This may pay for services denied by other insurance
  - All children born premature or with disabilities should apply
  - Disability qualifications are the same as for SSI
- Contact your County Assistance Office **CAO**-(see above for directions)
  - If you experience any problems: Ask to speak to the Outreach Contact Person
- Write boldly on application "**MA only Child with a Disability or Complex Medical Condition**"
- Submit a current statement from your doctor explaining all medical conditions

### CARE COORDINATION PROGRAMS: Ask for a Case Manager in the Special Needs Unit

- UPMC for You 800-286-4242 #2 #2 Tina Novotni
- Gateway 800-642-3550 #1 #2 Mona Jordan Hawkins/Jeanine Kilgore
- UHC 877-844-8844 Geri Boone/Jacki Stucke
- Access Plus 800-543-7633 ext 1507 Tina Ross-Knapp
- ACCESS Plus Consumer Helpline: 1-800-543-7633
- HIPP 814-726-4204 Sherri Lemmon
- Care Coordination for Children with Special Health Care Needs and Their Families (Highmark CHIP) 866-823-0892 412-544-0768 Amy Shannon
- Insurance programs-contact the Commonwealth of PA Insurance Department at:  
[www.insurance.state.pa.us](http://www.insurance.state.pa.us) [www.HereToHelp.pa.gov](http://www.HereToHelp.pa.gov) [www.PAFairCare.com](http://www.PAFairCare.com)
  - Automated Consumer Hotline: 877-881-6388

Q R S T U V W X Y Z



## TIPS FOR TRANSITION FROM SCHOOL TO ADULT SERVICES

[www.health.state.pa.us/transitionchecklist](http://www.health.state.pa.us/transitionchecklist)

- Get the Transition Health Care Checklist: **Transition to Adult Living in PA** and find additional resources and questions to help plan for independence.

### EDUCATION/TRANSITION HELP

Special Education CONSULT LINE 800-879-2301

IEP Facilitation helpline 800-222-3353 ext 3301 <http://odr.pattan.net>

PATTAN (PA Training & Technical Assistance Network) 800-446-5607 [www.pattan.net](http://www.pattan.net)

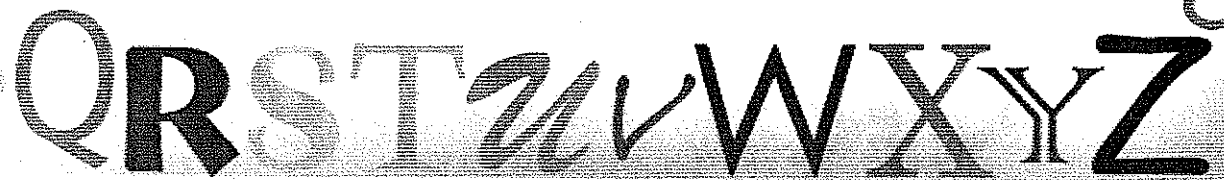
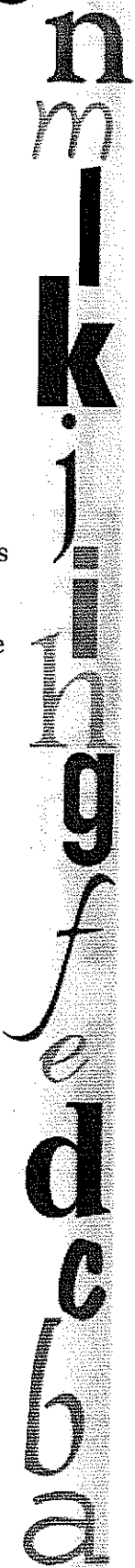
PEAL-Parent Education & Advocacy Leadership Center 866-950-1040

[www.pealcenter.org](http://www.pealcenter.org)

PEN Parent Education Network 800-522-5827 [www.parentednet.org](http://www.parentednet.org)

### Need to Know-to maintain Health Insurance

- Private Insurance - Youth may be able to continue on their family's insurance plan as long as they are considered an "adult disabled dependent child" or are in school/college
  - Ask Human Resources or Insurance Company for information/application. This information should include the process and form for the doctor to complete. Include all medical conditions. This may be available as the youth leaves high school
- HIPAA - The Health Insurance Portability and Accountability Act - stands also for portability. When changing Group Health Insurance get a **Certificate of Coverage** for portability. This will waive the waiting time and any increased costs for pre-existing conditions.
- Social Security as an adult is one pathway to public insurance (Medical Assistance) [www.socialsecurity.gov](http://www.socialsecurity.gov) 1-800-772-1213
- Youth receiving SSDI benefits as a child will need to reapply as an adult with disabilities
- Youth may want to apply for MAWD-Medical Assistance for Workers with Disabilities
- It is critical to have current evaluations and assessments including educational, medical and psychological. These are needed to apply and qualify for many services and programs
- Remember to return to the doctor for prescriptions and referrals for testing and services paid by public and private insurance
- Depending on whether private or public insurance is used as primary, explore the type and level of services available. Check if covered services meet the needs of the youth
- Be sure to show all service providers all insurance cards
- Keep updated on the National Healthcare Reform [www.PAFairCare.com](http://www.PAFairCare.com) or 877-881-6388



A Z y x w v u t s r q p o n m l k j i h g f e d c b a

**OTHER COMMUNITY RESOURCES**

**LOCAL FAMILY CENTERS or PUBLIC LIBRARIES**

**LICC**-Local Interagency Coordinating Council (Birth to five years-Parents and providers of Early Intervention). Ask your EI case worker for more information

**EARLY INTERVENTION** Call: **CONNECT 800-692-7288**

**MHMR** 0-3 years **Intermediate Unit** 3-5 years

**RIGHT TO EDUCATION TASK FORCE** (School age providers and parents)-  
Call the Intermediate Units with Pa Department of Education

**CASSP COORDINATORS:** (Children and Adolescent Service System Program)  
Located at your county MHMR office

**TRANSITION CONSUTANTS AND INTERAGENCY COORDINATORS:**  
Ask for these individuals to help with education, IEP, transition questions  
Located at the Intermediate Unit for your county

**ASSISTIVE TECHNOLOGY LENDING LIBRARY** 800-204-7428  
<http://disabilities.temple.edu>

**(SAP) PA Network for Student Assistance Program** for each school district  
Talk with the school nurses

**VENTILATOR ASSISTED PROGRAM** 877-KID-VENT  
[www.kidshome-vent.org](http://www.kidshome-vent.org) (877-543-8368)

**AMERICAN RESPIRATORY ALLIANCE of Western PA** [www.healthylungs.org](http://www.healthylungs.org)  
Jeannie Simms, Field Program Director 800-220-1990

**AMERICAN LUNG ASSOCIATION OF PA** [www.lungusa.org](http://www.lungusa.org) 800/932-0903

**ELKS HOME SERVICE NURSES:** [www.paelkshomeservice.org](http://www.paelkshomeservice.org)  
Pat O'Connor, RN Program Director Saint Mary's, PA 814-781-7860  
Margie Wood, RN Assistant Program Director 724-225-1395

O P Q R S T U V W X Y Z



A Z Y X W V U T S R Q P O

**MEDICAL HOME PROJECTS IN PA**

Pediatric Medical Home  
[www.pamedicalhome.org](http://www.pamedicalhome.org)

Renee M. Turchi, MD, MPH, Principal Investigator - [renee.turchi@drexelmed.edu](mailto:renee.turchi@drexelmed.edu)  
Molly Gatto, MHA - Program Director - [mgatto@paaap.org](mailto:mgatto@paaap.org)  
PA Chapter, American Academy of Pediatrics  
[www.pamedicalhome.org/video.html](http://www.pamedicalhome.org/video.html) 800-414-7391 • 484-446-3005

PA Academy of Family Physicians (PAFP)  
PAFP Foundation Patient-Centered Medical Home Project

Lee Ann Grajales, Vice President of Quality Initiatives - [lgrajales@pafp.com](mailto:lgrajales@pafp.com)  
[www.pafp.com/IPIP](http://www.pafp.com/IPIP) 800-648-5623 • 717-564-5365

**WHAT IS A MEDICAL HOME**

A medical home is not a building, house or hospital, but rather an approach to providing health services in a high-quality and cost-effective manner. A medical home is defined as health care that includes coordination of care

**WHAT DOES IT MEAN FOR YOUTH**

With health care services for adolescents who have special needs, the focus is on promoting physical and mental health as part of a successful transition from youth to adulthood

**WHAT CAN FAMILIES AND YOUTH DO**

- Contact the PAAAP or the PAFP to see if there is a medical home practice near you
- Talk with your doctors to see if they are connected to the PAAAP or PAFP and are they interested in participating in the Medical Home Projects
- For more information you or your doctors may contact the above programs

**OTHER HELPFUL WEB SITES:**

PA Department of Health/Education/Welfare [www.state.pa.us](http://www.state.pa.us)  
Social Security [www.ssa.gov](http://www.ssa.gov) 800-772-1213 TTY 800-325-0778  
Centers for Disease Control [www.cdc.gov](http://www.cdc.gov)  
5 A DAY Online [www.dpc.nci.nih.gov/5aday](http://www.dpc.nci.nih.gov/5aday)  
March of Dimes [www.modimes.org](http://www.modimes.org)  
PA Developmental Disabilities Council [www.paddc.org](http://www.paddc.org)  
Education Law Center [www.elc-pa.org](http://www.elc-pa.org)

**LEGAL ADVICE**

- Americans with Disabilities Act HOTLINE 800-514-0301
- Special Needs Trusts Google: Special Needs Planning
- PA Health Law Project 1-800-274-3258 [www.phlp.org](http://www.phlp.org)
- THE DISABILITY RIGHTS NETWORK OF PA 800-692-7443  
(Formerly the Education Law Center and the Disability Law Project)  
215-238-6970 (Phil) 412-391-5225 (Pitts) [www.drnpa.org](http://www.drnpa.org)

B  
C  
D  
E  
F  
G  
H  
I  
J  
K

n  
m  
l  
k  
j  
i  
h  
g  
f  
e  
d  
c  
b  
a

Q R S T U V W X Y Z



**OTHER HELPFUL NUMBERS**

Birth Certificates 724-656-3100

ECELS (PAAAP) 800-243-2357

The Food ALLERGY Network 703-691-3179

LEAD Information Line 800-440-5323

Poison Control Center 1-800-222-1222

Pennsylvania Families Inc. 1-800-947-4941 [www.pafamiliesinc.com](http://www.pafamiliesinc.com)

Learning Disabilities Association of America 412-342-1515

MANAGED CARE COMPLAINTS-PA DOH 888-466-2787

Office of Long Term Living Programs-Harrisburg 800-757-5042

PIN (Mental Health Support) 800-688-4226

SELF-DETERMINATION INITIATIVE OF PENNSYLVANIA 888-565-9435

Medic Alert 800-926-3342 [medicid@medicid.org](mailto:medicid@medicid.org)  
711 TELECOMMUNICATION RELAY SERVICE

**EDUCATION/TRANSITION HELP**

Special Education CONSULT LINE 800-879-2301

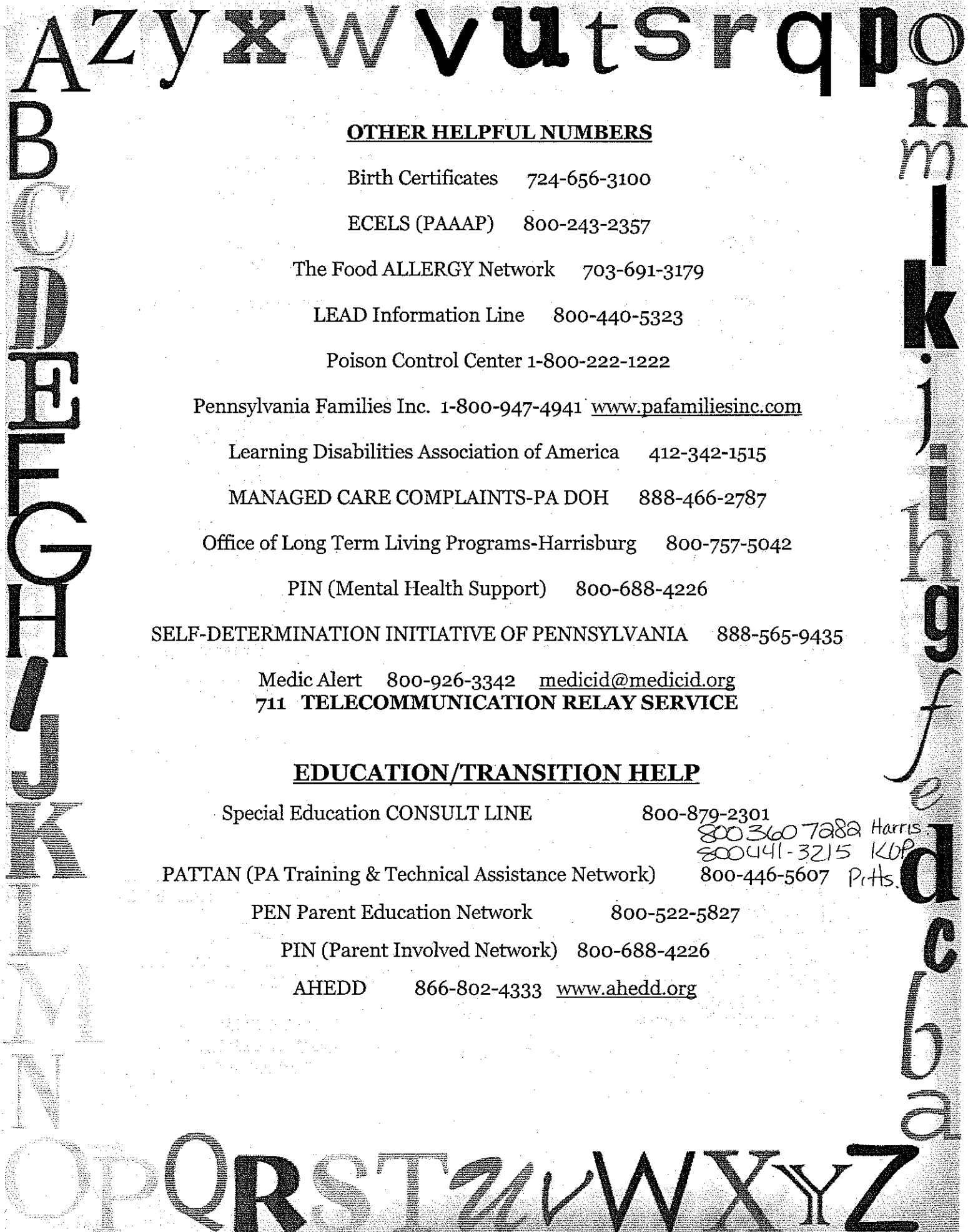
PATTAN (PA Training & Technical Assistance Network)

PEN Parent Education Network 800-522-5827

PIN (Parent Involved Network) 800-688-4226

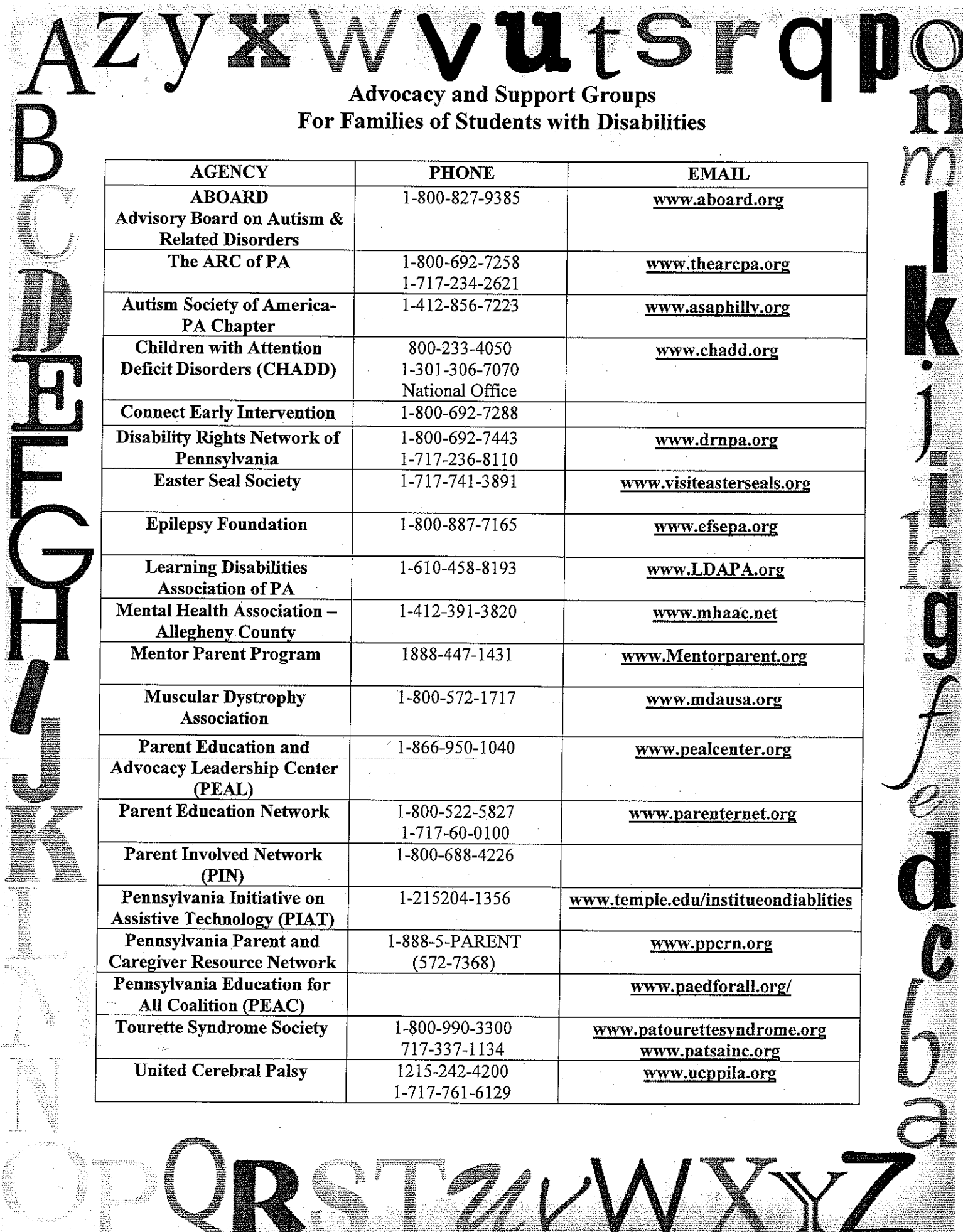
AHEDD 866-802-4333 [www.ahedd.org](http://www.ahedd.org)

800 360 7282 Harris  
800 441-3215 KOP  
800-446-5607 Pr.Hs.



**Advocacy and Support Groups  
For Families of Students with Disabilities**

AGENCY	PHONE	EMAIL
<b>ABOARD</b> Advisory Board on Autism & Related Disorders	1-800-827-9385	<a href="http://www.aboard.org">www.aboard.org</a>
<b>The ARC of PA</b>	1-800-692-7258 1-717-234-2621	<a href="http://www.thearca.org">www.thearca.org</a>
<b>Autism Society of America- PA Chapter</b>	1-412-856-7223	<a href="http://www.asaphilly.org">www.asaphilly.org</a>
<b>Children with Attention Deficit Disorders (CHADD)</b>	800-233-4050 1-301-306-7070 National Office	<a href="http://www.chadd.org">www.chadd.org</a>
<b>Connect Early Intervention</b>	1-800-692-7288	
<b>Disability Rights Network of Pennsylvania</b>	1-800-692-7443 1-717-236-8110	<a href="http://www.drnpa.org">www.drnpa.org</a>
<b>Easter Seal Society</b>	1-717-741-3891	<a href="http://www.visiteasterseals.org">www.visiteasterseals.org</a>
<b>Epilepsy Foundation</b>	1-800-887-7165	<a href="http://www.efsepa.org">www.efsepa.org</a>
<b>Learning Disabilities Association of PA</b>	1-610-458-8193	<a href="http://www.LDAPA.org">www.LDAPA.org</a>
<b>Mental Health Association – Allegheny County</b>	1-412-391-3820	<a href="http://www.mhaac.net">www.mhaac.net</a>
<b>Mentor Parent Program</b>	1888-447-1431	<a href="http://www.Mentorparent.org">www.Mentorparent.org</a>
<b>Muscular Dystrophy Association</b>	1-800-572-1717	<a href="http://www.mdausa.org">www.mdausa.org</a>
<b>Parent Education and Advocacy Leadership Center (PEAL)</b>	1-866-950-1040	<a href="http://www.pealcenter.org">www.pealcenter.org</a>
<b>Parent Education Network</b>	1-800-522-5827 1-717-60-0100	<a href="http://www.parenternet.org">www.parenternet.org</a>
<b>Parent Involved Network (PIN)</b>	1-800-688-4226	
<b>Pennsylvania Initiative on Assistive Technology (PIAT)</b>	1-215-204-1356	<a href="http://www.temple.edu/instituteondiabilities">www.temple.edu/instituteondiabilities</a>
<b>Pennsylvania Parent and Caregiver Resource Network</b>	1-888-5-PARENT (572-7368)	<a href="http://www.ppcrn.org">www.ppcrn.org</a>
<b>Pennsylvania Education for All Coalition (PEAC)</b>		<a href="http://www.paedforall.org/">www.paedforall.org/</a>
<b>Tourette Syndrome Society</b>	1-800-990-3300 717-337-1134	<a href="http://www.patourettesyndrome.org">www.patourettesyndrome.org</a> <a href="http://www.patsainc.org">www.patsainc.org</a>
<b>United Cerebral Palsy</b>	1215-242-4200 1-717-761-6129	<a href="http://www.ucppila.org">www.ucppila.org</a>



A Z y x w v u t s r q p o

B  
C  
D  
E  
F  
G  
H  
I  
J  
K

n  
m  
l  
k  
j  
i  
h  
g  
f  
e  
d  
c  
b  
a

**Other resources**

**Caring Program**

**[www.caringprogram.com](http://www.caringprogram.com)**

Service area 49 counties served by Highmark  
Anyone can refer a CHIP member enrolled through Highmark to the  
Caring Program by calling **1-800-823-0892**

**County Assistance Offices Headquarters**

**[www.dpw.state.pa.us](http://www.dpw.state.pa.us)**

Medical Assistance Applications- Access card

**Social Security Administration Offices (SSA)/Headquarters**

**[www.ssa.gov](http://www.ssa.gov)**

Applications for (SSI) Social Security Income  
Medical Assistance Access card

**Career Link Offices/Headquarters**

**[www.pacareerlink.state.pa.us](http://www.pacareerlink.state.pa.us)**

Assistance locating a Job and/or Training  
Research Careers and/or Create a Resume  
Receive Vocational Rehabilitation

**Office of Vocational Rehabilitation**

**[www.pacareerlink.state.pa.us](http://www.pacareerlink.state.pa.us)**

The Pennsylvania Office of Vocational Rehabilitation, or OVR, provides vocational rehabilitation services to help persons with disabilities prepare for, obtain, or maintain employment. OVR provides services to eligible individuals with disabilities, both directly and through a network of approved vendors. Services are provided on an individualized basis. The OVR counselor, during face-to-face interviews, assists customers in selecting their choice of vocational goals, services and service providers. An Individualized Plan for Employment (IPE) is developed, outlining a vocational objective, services, providers and responsibilities. Certain services are subject to a Financial Needs Test (FNT) and may require financial participation by the customer. Counseling and guidance, diagnostic services, assessments, information and referral, job development and placement, and personal services such as readers or sign language interpreters are provided at no cost to the individual. Also, by law OVR customers receiving Social Security benefits for their disability (SSI, SSDI) are exempt from OVR's Financial Needs Test.

L  
M  
N  
O  
P

Q R S T U V W X Y Z

A Z Y X W V U T S R Q P O

B  
C  
D  
E  
F  
G  
H  
J  
K

**Make a Wish**  
[greaterpa@wishworld.org](mailto:greaterpa@wishworld.org)

The Make-A-Wish Foundation® of Greater Pennsylvania and Southern West Virginia grants wishes of children with life-threatening medical conditions to enrich the human experience with hope, strength and joy. We are proud to have served more than 9,000 children in 57 Pennsylvania and 23 West Virginia counties in our 24-year history.

**PFI**  
**Pennsylvania Families Incorporated**  
Dianna Brocious, Project Director  
1-800-947-4941  
[pafamilies@comcast.net](mailto:pafamilies@comcast.net)  
[www.pafamiliesinc.com](http://www.pafamiliesinc.com)

PFI is a statewide network that:

- Shares the common concerns about children and their special needs
- Brings groups together
- Utilizes the power of all families to bring about change in the community, county and state

**Nurse Family Partnership**

Nurse-Family Partnership is an evidence-based, nurse home visiting program that improves the health, well-being and self-sufficiency of low-income, first-time parents and their children. The Nurse-Family Partnership National Service Office, located in Denver, Colorado is a nonprofit organization that provides service to communities in implementing and sustaining this program.

Nurse-Family Partnership Implementing Agencies are supported by a team of public health policy and administration, nursing, education and program evaluation professionals at the National Service Office who collaborate with Public/Private Ventures, based in Philadelphia, Invest in Kids, based in Denver, and other partners in the 23 states where Nurse-Family Partnership is currently established.

For more information, visit the NFP National Service Office at 1900 Grant Street, Suite 400, Denver, CO 80203, call toll free at 866.864.5226, or send email to [info@nursefamilypartnership.org](mailto:info@nursefamilypartnership.org)

n  
m  
l  
k  
j  
i  
h  
g  
f  
e  
d  
c  
b  
a

O P Q R S T U V W X Y Z

**WIC- Women's Infant and Children program**  
**www.pawic.com**

WIC is a federally funded program that provides healthy supplemental foods and nutrition services for pregnant women, postpartum and breastfeeding women, infants and children under age five in a supportive environment. The goal of the WIC Program is to decrease the risk of poor birth outcomes and to improve the health of the participants during critical stages of growth and development.

**EARLY INTERVENTION**  
**Call: CONNECT 800-692-7288**  
**Birth to Three and Three to Five Programs**

**The ARC of Pennsylvania**  
**Advocacy & Resources for Citizens**  
with cognitive, intellectual and developmental disabilities  
**www.thearca.org**

**The ARC of Pennsylvania is affiliated the ARC of the United States and currently has 35 local chapters serving 47 counties across Pennsylvania**  
**The ARC pursues its mission in the following ways:**  
Public Policy Advocacy                      Family Training  
Public Awareness                              Community Resources

**Autism Society of America**  
ASA Chapters  
Information and Support  
Legal/Advocacy and Training  
**www.autism-society.org**

ASA chapters are your best source of information and support. Most chapters are volunteered by parents, care providers and other professionals. ASA has chapters in nearly every state reaching out to individuals with autism and their families with information, support, and encouragement. A chapter is the place where:

- Dedicated parent and professional volunteers provide information and services specific to a local area
- Parents can find resources for recently diagnosed children
- Families can find comfort and companionship managing the years of growth and change
- Local grassroots advocacy is organized for implementing change where change is necessary

Azyxwvutsrqpp

B  
C  
D  
E  
F  
G  
H  
I  
J  
K

o  
n  
m  
l  
k  
j  
i  
h  
g  
f  
e  
d  
c  
b  
a

OPQRSTuvwxYZ