

Fun facts about 4-H:



- 4-H began more than 100 years ago.
- It has become the nation's largest youth development organization.
- By 1924, 4-H became recognized universally as the name of youth club work in the United States.
- The symbol of 4-H is a green four leaved clover with a white H on each leaf.
- There are approximately 185,800 4-H members in Pennsylvania.
- The 4 H's stand for
 - Head
 - Heart
 - Hands
 - Health
- The 4-H Motto is: "To Make the Best Better."
- The 4-H Slogan is: "Learn by Doing."



How to join?

Contact your county agent:
Kelly Weisner
4-H/Youth Development
Coordinator
Lehigh County Ag Center
4184 Dorney Park Rd.
Room 104
Allentown, PA 18104

Phone: 610-391-9840
E-mail: kmb26@psu.edu

Penn State encourages persons with disabilities to participate in its programs and activities. If you anticipate needing any type of accommodation or have questions about the physical access provided, please contact your local Extension office in advance of your participation or visit.

This publication is available in alternative media on request.

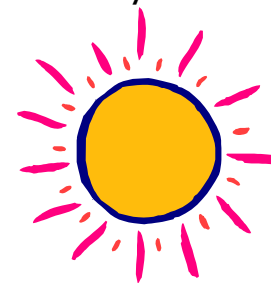
The University is committed to equal access to programs, facilities, admission and employment for all persons. It is the policy of the University to maintain an environment free of harassment and free of discrimination against any person because of age, race, color, ancestry, national origin, religion, creed, service in the uniformed services (as defined in state and federal law), veteran status, sex, sexual orientation, marital or family status, pregnancy, pregnancy-related conditions, physical or mental disability, gender, perceived gender, gender identity, genetic information or political ideas. Discriminatory conduct and harassment, as well as sexual misconduct and relationship violence, violates the dignity of individuals, impedes the realization of the University's educational mission, and will not be tolerated. Direct all inquiries regarding the nondiscrimination policy to Dr. Kenneth Lehrman III, Vice Provost for Affirmative Action, Affirmative Action Office, The Pennsylvania State University, 328 Boucke Building, University Park, PA 16802-5901, email: kfl2@psu.edu, phone: 814-863-0471.

Penn State **Extension**

Sunshine 4-H Community Club

**A New Club for Teens with
Mild Autism**

Get involved in your community!



**4-H is a community of young
people across America learn-
ing leadership, citizenship,
and life skills.**

extension.psu.edu



PENNSTATE



Cooperative Extension
College of Agricultural Sciences

What is the Sunshine Club?

It is a Lehigh County 4-H Club formed specifically for teens who have mild Autism and are looking to engage in their local community through 4-H projects, community based service projects, and socialization with peers.



What are 4-H Projects?

The members of the club will select and vote on various 4-H projects to complete each year.

Choices may include:

- Cooking
- Gardening
- Woodworking
- Crafts
- Wildlife

Service Projects may include:

- Baking dog biscuits for shelters
- Trail maintenance for parks

Who can join?

Any youth (ages 11-18 as of January 1) in Lehigh County that is currently interested in participating in a community based club. This club is specifically for individuals with mild Autism. Participants will need to be able to communicate his/her needs and maintain safe control of his/her behavior at all times as the Club will be out in the community for service projects.

Tell Me More:

Youth are expected to participate as equal members in the club. Members will be encouraged to share ideas for future projects and activities.

Club registration will be limited to allow for a successful experience for all members. Club Leaders are screened volunteers.

Where and How do we meet?

The Sunshine Club will meet twice a month on Tuesday evenings from September through May. The meetings will be held at the Lehigh Carbon Community College Campus in Schnecksville, PA

Contact the Lehigh County Extension Office for details on joining.



How do families get involved?

Parents will be encouraged to help their 4-H member participate and complete the club projects. They are also encouraged to attend meetings, and assist the club leaders and members with the community based activities.